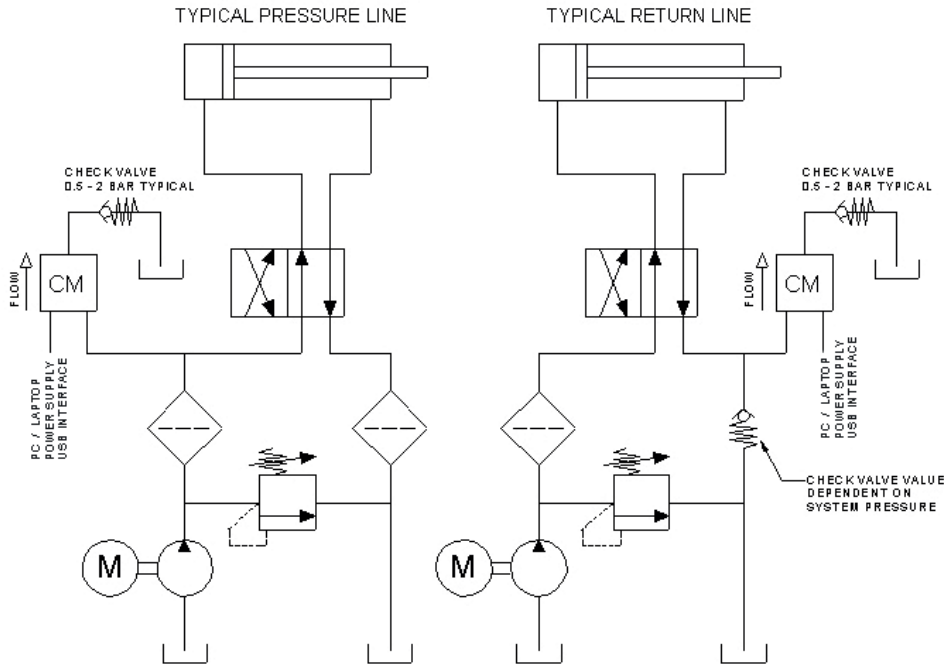
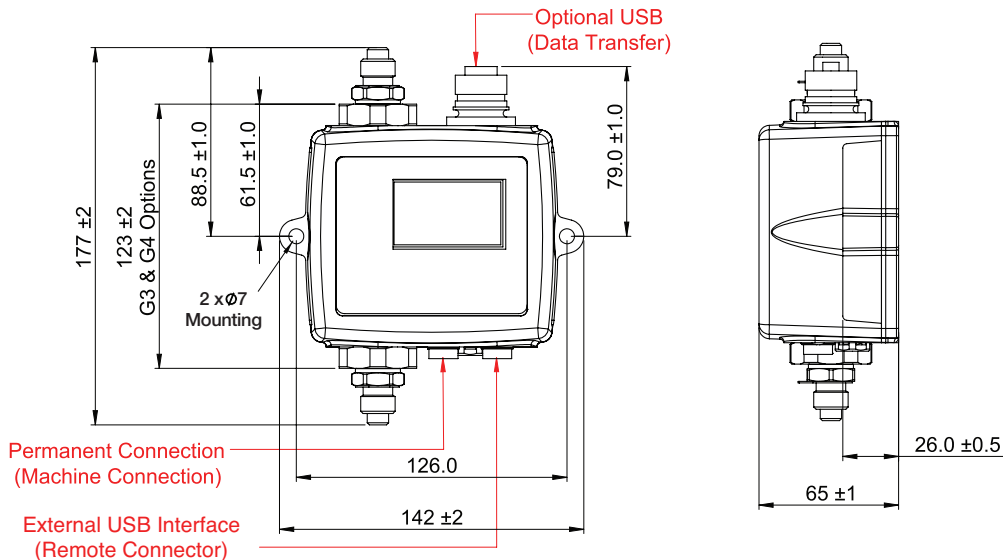


Typical Installation Guidelines



Schematics are for indicative purposes only.
It is important to ensure a 0.5 to 2.0 barg differential across the CM

Contamination Monitor Dimensions



Quick Start Guide

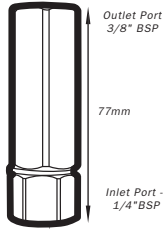
- 1 Identify whether your contamination monitor is a screen or non screen version.**
Keypad and 128 x 64 pixel backlit display
- 2 Identify the connection type on your contamination monitor.**
This can be found on the product label on the side of the unit.
M16x2 Hydraulic Connector
1/4" BSPP
7/16 UNF
- 3 Where flow control is required fit your control valve.**
See over page for instructions then continue to Step 4
- 4 Connect the contamination monitor to the hydraulic system.**
Support if desired using the M6 mounting holes provided. Ensure that the unit is in a vertical orientation with oil following the direction of flow arrow found on the product label.
- 5 Check that all pressure fittings are sufficiently tight as not to allow leakage.**
In the interests of safety, always check this at low pressure if possible. Once happy with the installation, isolate the upstream pressure before continuing to STEP 6
- 6 Plug the control cable from your USB interface into the contamination monitor power connection port.**
For hardwired or PLC controlled applications, refer to the full user manual for instruction, then go to STEP 8.
- 7 If you are using a USB interface, connect to your laptop using the USB cable.**
A permanent DC supply may also be connected.
- 8 The contamination monitor should now be powered.**
This will be indicated by either the display (Screen version only) or status LED.
- 9 Release upstream pressure gradually as not to shock the product or system.**
- 10 TEST**
Once at working system pressure, press the green button on the front panel (Screen version only) of the unit and it will perform a 120 second test (factory set time).

*For full product, software and installation instructions see the user manual. As a policy of continual improvement, we reserve the right to alter specifications without prior notice. Except as permitted by such license, no part of this publication may be reproduced, stored in a retrieval system or transmitted in any form or means electronic, mechanical, recording, or otherwise, without prior written permission.

Flow Control Valve

1 Attach the flow control valve to the outlet port of the contamination monitor using the correct fittings.

(Various port options available please consult product literature)

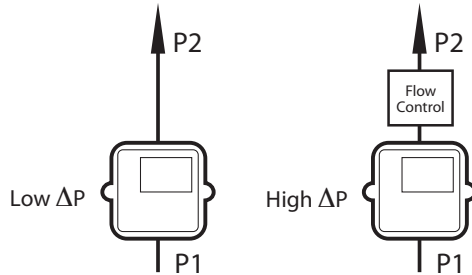


2 Ensure correct orientation. The direction of flow arrow must match the direction of flow arrow on the contamination monitor.

Installation

The contamination monitor can be installed in series or in parallel.

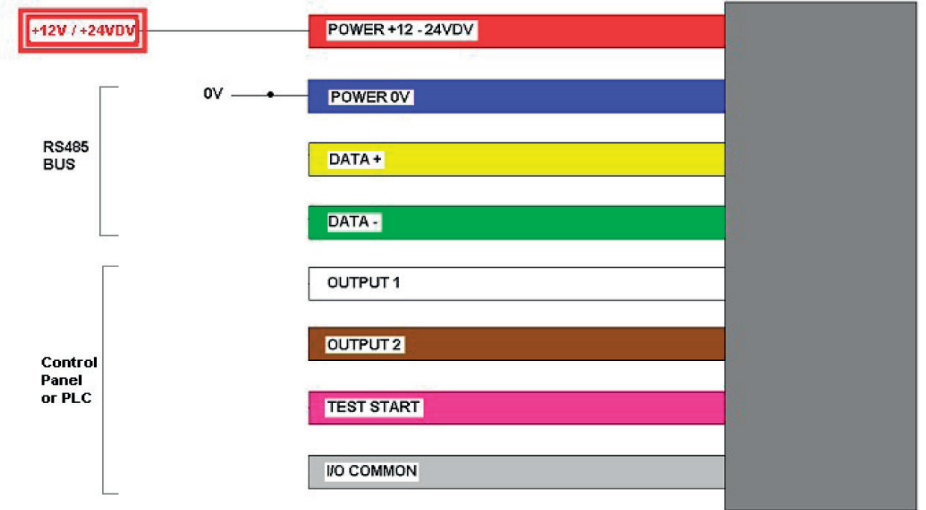
Wherever it may experience high differential pressures a flow control valve may be required.



Electrical Interface

Wiring Quick Start Rev 1

1 Electrical supply 9V to 36V (24V typical)



6 Plug the control cable from your USB interface into the contamination monitor power connection port.

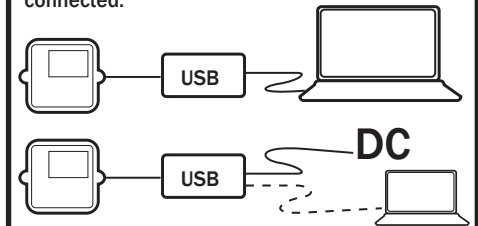
For hardwired or PLC controlled applications, refer to the full user manual for instruction, then go to STEP 8.



Caution: Ensure that power is connected to the RED wire only to avoid damaging product.

7 If you are using a USB interface, connect to your laptop using the USB cable.

A permanent DC supply may also be connected.



*For full product, software and installation instructions see the user manual. As a policy of continual improvement, we reserve the right to alter specifications without prior notice. Except as permitted by such license, no part of this publication may be reproduced, stored in a retrieval system or transmitted in any form or means electronic, mechanical, recording, or otherwise, without prior written permission.