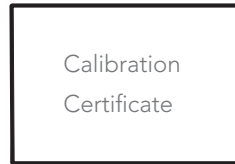
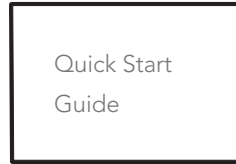
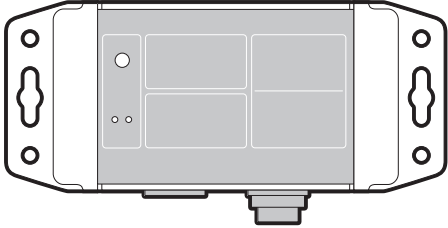


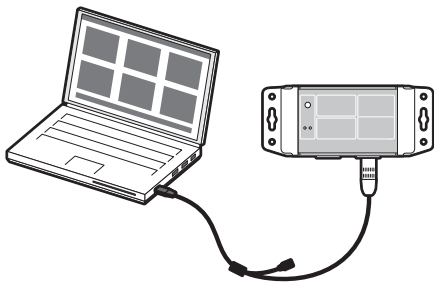
Oil Quality Display (OCS I-Displays)

QUICK START GUIDE

WHAT'S IN THE BOX



1. Configuration



Allow configuration cable to update drivers.

NOTE: Cables are sold separately



Configuration parameters:

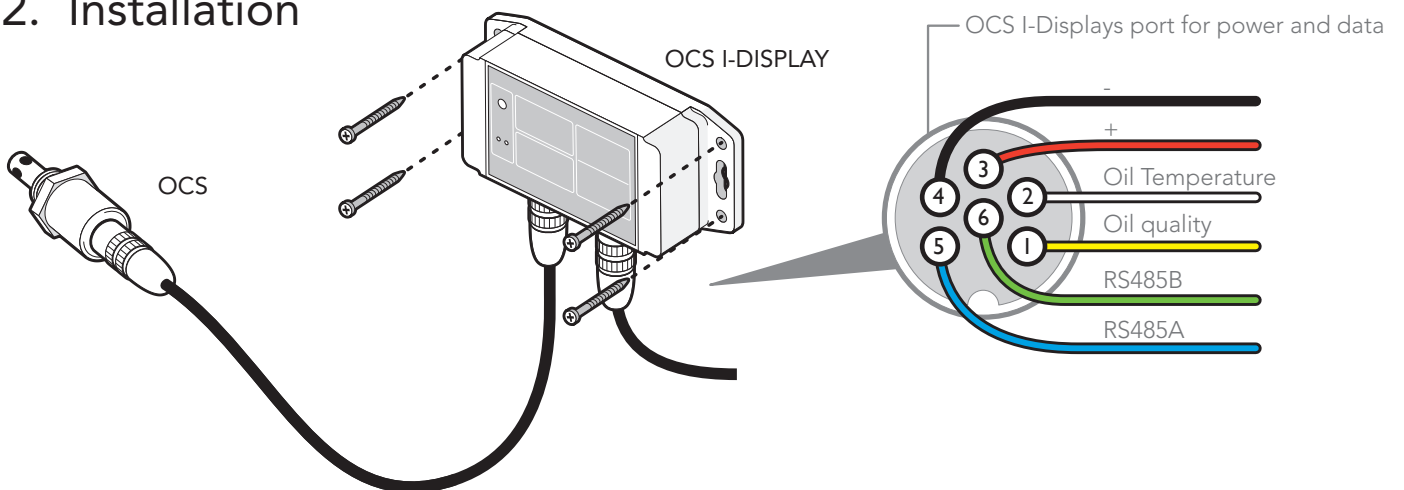
- ▶ Warning and alarm levels
- ▶ Temperature units
- ▶ Datalog interval
- ▶ Rate of change interval
- ▶ Bluetooth on/off

DEFAULT CONFIGURATION

(Quality warning thresholds are configurable)

TDN	Oil quality	Indicator
1200	Sensor in air / No oil detected	Alarm (HIGH)
		Warning (HIGH)
1000	New	
	Good	
	Worn	Warning (LOW)
500	Severely worn / Needs replacing	Alarm (LOW)
	End of life	
250		
0		

2. Installation



3. Activation steps

- Check installation
- Power on
- Wait for 1 minute
- Check output

4. Troubleshooting

1. Check configuration (step 1)
2. Refer to manual
3. sales@stauff.com

