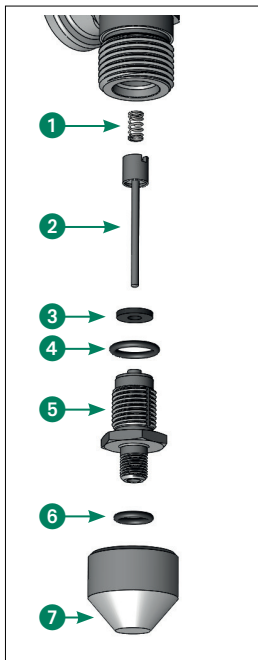


## Assembly Instruction

1. Before you start mounting the valve please make sure that the gas pressure of the accumulator has been released
2. Mount the O-rings **4** and **6** on the valve core **5**
3. Place flat seal **3** on the valve core **5**
4. Insert the valve pin **2** into the valve core **5**
5. Place the spring **1** on the top of the Valve pin **2**
6. To position the spring **1** correctly align the accumulator horizontally or the SBAA vertically
7. Screw the complete assembly into the SBAA or the accumulator
8. Screw the protection cap **7** on the SBAA or accumulator after the charging has been done



Complete Assembly

