

## Simple, efficient, safe!

Up to 70% less installation time with the innovative fastening solutions for power cables in wind turbines

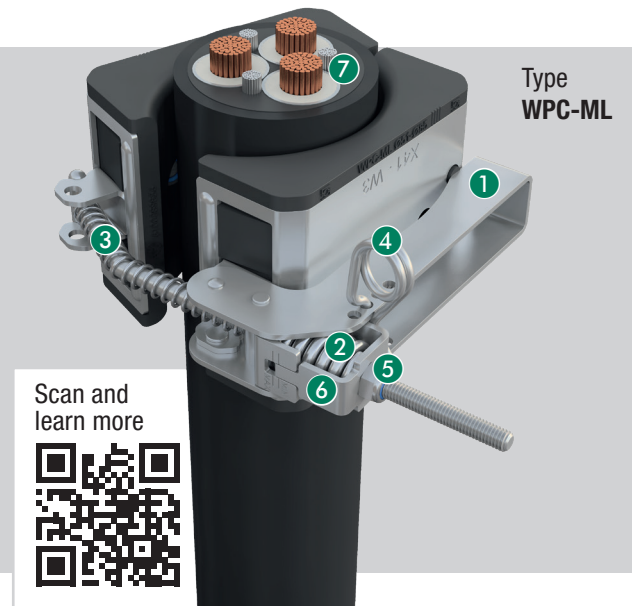
With the **WPC system**, STAUFF has developed a range specifically for fastening **low- and medium-voltage power cables in wind turbine towers**.

permanent fastening of the cables under adverse conditions and compliance **with all industry-relevant requirements, e.g. electrical safety and safety during installation**.

The features of the WPC clamps include **simple, quick and tool-free installation** with the option of readjustment,

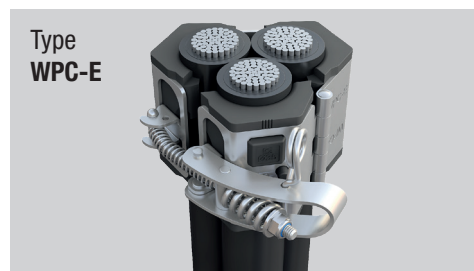
### Main Features of WPC

- ① Quick-locking system for quick and easy installation of the cable without tools
- ② Compression springs to maintain the pre-tension
- ③ Compression spring prevents the lock from twisting
- ④ Locking mechanism to prevent unintentional opening
- ⑤ Adjusting nut for easy readjustment of the cable diameter
- ⑥ Force measuring sleeve for monitoring the pre-tensioning force in the system
- ⑦ Compatible with all common cable types and diameters used in the wind power industry

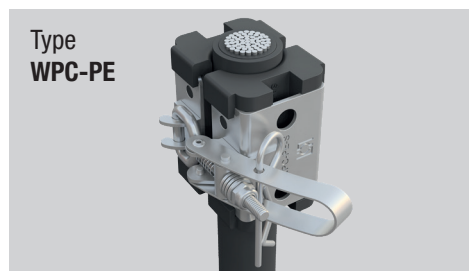


### Advantages of WPC

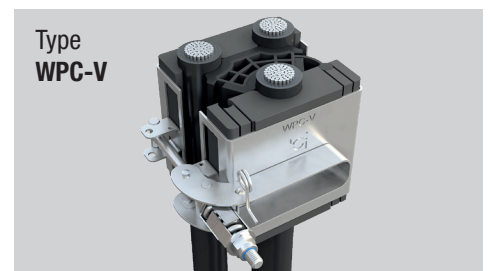
- **Fast, tool-free assembly with up to 70% less installation time**
- **Preventive occupational safety:** reduction of the risk of falling tools and components during installation
- Compact and therefore **space-saving design**
- **Protection** against unintentional loosening
- **Short-circuit resistance**, tested in an independent test laboratory in accordance with DIN EN 61914 (VDE 0604-202):2010-01 (WPC-E and WPC-PE only)
- **Optimum cable protection** thanks to particularly soft clamping jaws, optionally made of fire protection material (UL 94 V-0)
- **High variability** thanks to interchangeable inserts with clamping jaws customised to the cable type
- **Flexible application options** thanks to consistently high clamping forces in a wide temperature range
- **Wide range of mounting options** on various C-rails, brackets etc. possible
- **High resistance and durability** thanks to STAUFF zinc/nickel coating



Fastening of three cables with all common diameters



Fastening of PE conductors for earthing or regulating magnetic currents



Customer and application-specific variants and modifications, for example with defined cable spacing